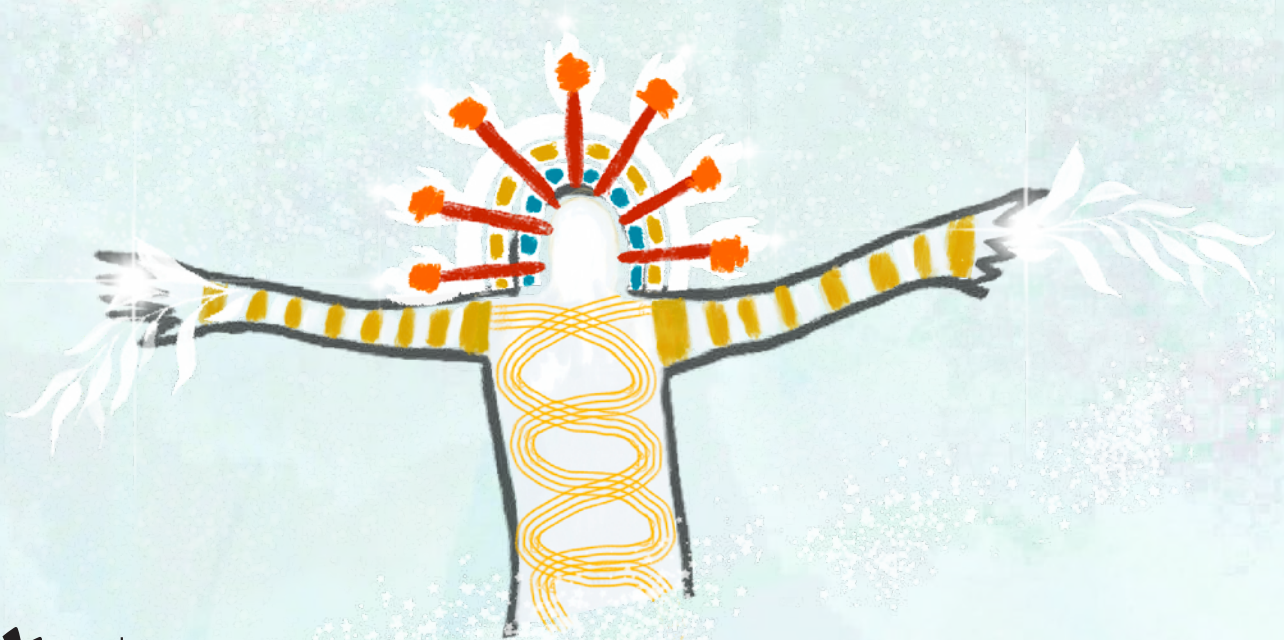


LEARN THE LOCAL ABORIGINAL LANGUAGE



Greetings and Conversations

Aboriginal word	Sounds like	English translation
Budyari mulinawul	<i>Bood-jerri mul-lin-ow-ool</i>	Good Morning
Budyari gamarruwa	<i>Bood-jerri kama-rua</i>	Good Day
Budyari nguwing	<i>Bood-jerri gnoo-wing</i>	Good Night
Yanu	<i>Yanoo</i>	I go or I am going now
Guago	<i>Gua-go</i>	Bye, bye or Stop

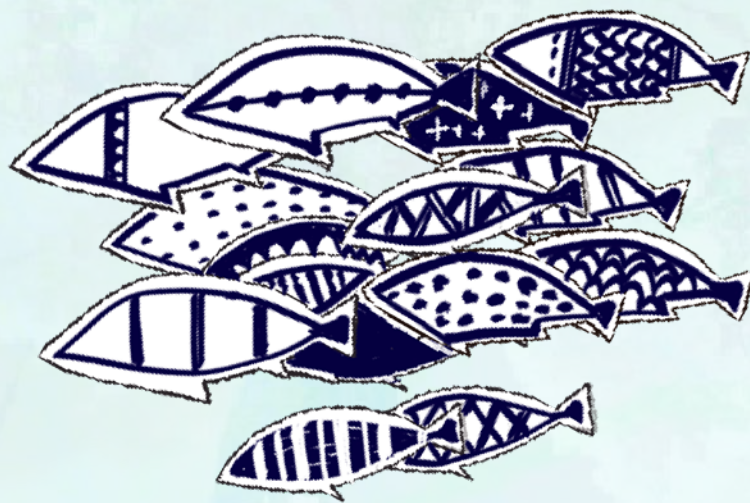


LEARN THE LOCAL ABORIGINAL LANGUAGE



Kin, Family and People

Aboriginal word	Sounds like	English translation
Mudjin	<i>Mud-gin</i>	Family <i>or</i> relations
Wiyanga	<i>Wy-ang-a</i>	Mother
Biyanga	<i>Bee-anga</i>	Father
Babana	<i>Ba-ba-na</i>	Brother
Djurumin	<i>Tee-rum-min</i>	Sister
Gamarada	<i>Kamarada</i>	Friend



LEARN THE LOCAL ABORIGINAL LANGUAGE



General terms

Aboriginal word	Sounds like	English translation
Nura	<i>No-rar</i>	Country
Iyura	<i>Eora</i>	Aboriginal People, from this place
Garrigarrang	<i>Ca-ra-ga-rang</i>	Sea
Bamal	<i>Pe-mul</i>	Earth, clay or the ground
Giba	<i>Kiba</i>	Rock
Guwing	<i>Goo-wing</i>	Sun
Yanadah	<i>Yen-na-dah</i>	Moon
Birrung	<i>Bir-rong</i>	Stars
Corroboree	<i>Garri-berri</i>	Dancing Ceremony
Baraya	<i>Bor-ra-ya</i>	Sing
Warada	<i>War-ret-tah</i>	Waratah
Gulgadya	<i>Goolgadie</i>	Grass tree – Xanthorrhoea
Damun	<i>Tam-mun</i>	Port Jackson Fig
Badagarang	<i>Pat-ta-ga-rang</i>	Kangaroo - Eastern Grey
Burumin	<i>Boo-roo-min</i>	Possum - Grey
Gawura	<i>Cau-ra</i>	Whale
Bumarit	<i>Boo-mer-rit</i>	Boomerang for fighting, sword or scimitar shaped
Nuwi	<i>Now-ey</i>	Canoe
Bara	<i>Bur-ra</i>	Fishhook – made from shell



LEARN THE LOCAL ABORIGINAL LANGUAGE



Local Place Names

Aboriginal word	Sounds like	English translation
Tallowalodah	<i>Tul-la-wal-lo-dah</i>	The Rocks
Tarra	<i>Tar-dah</i>	Dawes Point
Dubuwagulya	<i>Tjub-ow-gule</i>	Bennelong Point
Maliyawul	<i>Meeli-yah-wool</i>	Campbells Cove
Tumbalong	<i>Tum-balong</i>	Darling Harbour
Wuganmagulya	<i>Woggan-ma-gule</i>	Farm Cove
Waran or Warrane	<i>War-ran</i>	Sydney Cove
Yurong	<i>Yoo-rong</i>	Mrs Macquarie's Point

